

The PFA represents its members' interests. If you need our help on any issue, please do not hesitate in contacting the PFA head office (6652-7374) &/or the Chief Executive Officer (0429303371)

INITIAL RESPONSES RE CATCH REPORTING CONCERNS

PFA has been discussing our members' concerns with the DPI regarding some of the catch reporting issues. DPI is still working through a number of the issues raised but have advised of some quick fixes that have occurred:

- DPI is looking into weather proofing the Interim Report paperwork;
- Text size – DPI is investigating how to enable fishers to increase the text size on the FisherMobile;
- They are looking at long term solutions regarding fishers being able to weigh-in at the cooperatives for their post landing reports;
- The App has recently been upgraded to improve run-time and ease of use.
- Refer to Nomination of Fishing Business below

NOMINATION TO A FISHING BUSINESSES

Due to the changes made through the Fisheries Amendment Bill late last year, fishers who have outstanding fees to be paid to NSW Fisheries are now able to nominate a fisher to a fishing business. This can be done through your FisherDirect or contacting Fisheries Business Services on Contact Fisheries Business Services or do it through your FisherDirect 1300 720 662

COUNTRY OF ORIGIN LABELLING

The PFA has been involved in discussions with the DPI, Hotel & Caters Association and Seafood Importers Association regarding the introduction of Country of Origin Labeling through the NSW food service. The main debate centers on voluntary Country of Origin Labelling verses mandatory. The PFA has always advocated the need for mandatory labelling and cited a large volume of research to support this stance. However, there is a large push from other stakeholders that voluntary labelling will achieve the results that PFA has sought with less cost to the food service operators. To solve this debate, once and for all, we have agreed to a robust and monitored trial of the voluntary labelling to assess each other's arguments and then put forward our case again to government based on the result.

The NSW Government has committed to this process.

Recently Labor championed industry's cause by putting forward a Country of Origin Labelling bill. The PFA supported this bill (see media release, social media posts and ABC interviews). However, we did express concern regarding some issues with the bill. Mr Mehan in his Second Reading speech claimed that country of origin labelling will become a licensed condition for food retailers under clause 45 of the Food Regulation 2015. However, Clause 45 of the Food Regulation 2015 refers to licences issued under a food safety scheme. We were advised that the seafood safety scheme covers the harvesting, processing, packaging, transporting and wholesaling of seafood. It does NOT cover food retailing. There were also no penalties stated in the bill. **We applaud Labor's intent and thank Mr Mehan for his efforts.** Here's the link:

<https://www.parliament.nsw.gov.au/bills/Pages/bill-details.aspx?pk=3431>

The PFA strongly maintains that Country of Origin Labelling is required across the food service as a mandatory and enforceable scheme.

The PFA represents its members' interests. If you need our help on any issue, please do not hesitate in contacting the PFA head office (6652-7374) &/or the Chief Executive Officer (0429303371)

PFA BOARD NOMINATION FOR REGION 4A (WALLIS)

We now have two director positions available for PFA Committee of Management (COM) to represent Region 4a (north) which includes Wallis Lake region. The PFA COM would like to express their thanks to Mr. Greg Golby for all his efforts in sitting on the COM and wish him well in his future business endeavours.

The CoM will meet a minimum of four times per year and this can be by teleconference or face to face meetings. Access to emails is an essential component of the Director being able to adequately represent his/her region. The role of the CoM is one of managing the strategic and operational direction of the PFA with the day to day work of the association undertaken by the Executive Officer.

A minimum of **2 PFA nominations** must be received for the person to be eligible to run. If there are more than 2 nominees for the region an election process will be held (e.g. postal ballot). Nominees must come from the specific region. Please contact the PFA Office for a copy of the nomination form. Nominations must be received by the PFA office by **Friday 16th March 2018**. Forms can be emailed to admin@pfai.com.au or posted to 69 Marina Drive, Coffs Harbour NSW 2450.

PFA RESPONSE TO THE IAP

Thanks to our members who provided advice and editorials of our PFA submission to the Independent Allocation Panel. Please just contact us for a copy of our finalised report. The submissions are due **TODAY** so make sure you get your submissions emailed through to IAP@au.gt.com

NEXT PFA COM MEETING

The next PFA Committee of Management (CoM) meeting is scheduled for Friday 23rd March at the Sydney Fish Market. PFA members are encouraged and invited to attend the meeting and discussions from 11am onwards. Lunch will be provided.

QUOTA CALCULATIONS

Please note that when quota shares were allocated last year, that the quota units were subject to rounding up. This rounding-up has made it somewhat confusing when calculating how many units you are entitled to.

For example:

Spanner Crab Shares	Quota Units (x 0.15778)
40	7
80	13 (not 14 because $80 \times 0.15778 = 13$)
120	19 (not 21 as $120 \times 0.15778 = 19$)

The formulas used for the issuing of quota shares can be found on https://www.dpi.nsw.gov.au/_data/assets/pdf_file/0011/739523/Fisheries-Management-Allocation-Formula-for-Issuing-Quota-Shares-Notice-2017-INT17-219765.pdf

Also, important to note that the quota shares and quota units can be transferred independently.

The PFA represents its members' interests. If you need our help on any issue, please do not hesitate in contacting the PFA head office (6652-7374) &/or the Chief Executive Officer (0429303371)

MESSAGE FROM THE DPI FISHERIES

NSW COMMERCIAL FISHERIES

Key dates

23 February Payments are due to RAA for shares purchased in the market

- 1 March Start of BAP 'Enforcement' phase - focusing on strict enforcement of the rules. (This follows a 3 month 'Advisory' period from 1 Dec 2017 - 28 Feb 2018)
- 1 March Reintroduction of application fees for all paper-based fishing business/share transfers - and requirement to pay overdue fees before transfers are processed.

Registering for FisherMobile

Don't forget to register for FisherMobile if you hold any endorsement that requires real-time reporting of fishing activity/quota use - whether or not you intend to use it in the short-term. Registration is free and will make sure you are set up for real-time reporting if you decide to use the endorsement.

Weighing catch

Remember that you need to accurately weigh any catch subject to quota. Using good quality, well-constructed scales may reduce issues with accuracy and reliability. You should also check the accuracy of your scales each time you use them by use of a trade mass. Trade masses are available from industrial scale suppliers.

For information on the trade measurement system visit www.measurement.gov.au/Industry

Independent Allocation Panel (IAP)

The IAP will be consulting interested Southern Fish Trawl fishing business owners during March 2018.

For more information on the IAP process and how to participate, please visit the Grant Thornton website at www.grantthornton.com.au/IAP

Grants for financial advice

Applications for financial advice grants from the RAA (max \$1000) close on 31 May 2018.

Note: Under the RAA guidelines, legal advice grants were only available for the purpose of reviewing the terms and conditions for the subsidised share trading market. As the subsidised share trading market is complete, RAA advice grants are now limited to \$1000 and only for financial advice. Revised guidelines have been published on the RAA website.

CommFish NSW: Investment Statement for the Commercial Fishing Trust Fund

The advisory council for commercial fishing, CommFish NSW, has developed an 'Investment Statement' for priorities in expenditure from the Commercial Fishing Trust Fund. See the DPI website: https://www.dpi.nsw.gov.au/_data/assets/pdf_file/0004/800068/cfff-investment-statement.pdf

PFA Update 23rd February 2018



The PFA represents its members' interests. If you need our help on any issue, please do not hesitate in contacting the PFA head office (6652-7374) &/or the Chief Executive Officer (0429303371)

FishOnline helpline - 1300 720 662

User guides and video demonstrations are available on the DPI website:

FisherDirect - <https://www.dpi.nsw.gov.au/commfish/fisherdirect>

FisherMobile - <https://www.dpi.nsw.gov.au/commfish/fishermobile>

Business Adjustment Program hotline - 1300 726 488

Ongoing assistance - please visit www.dpi.nsw.gov.au/commfish/assistance

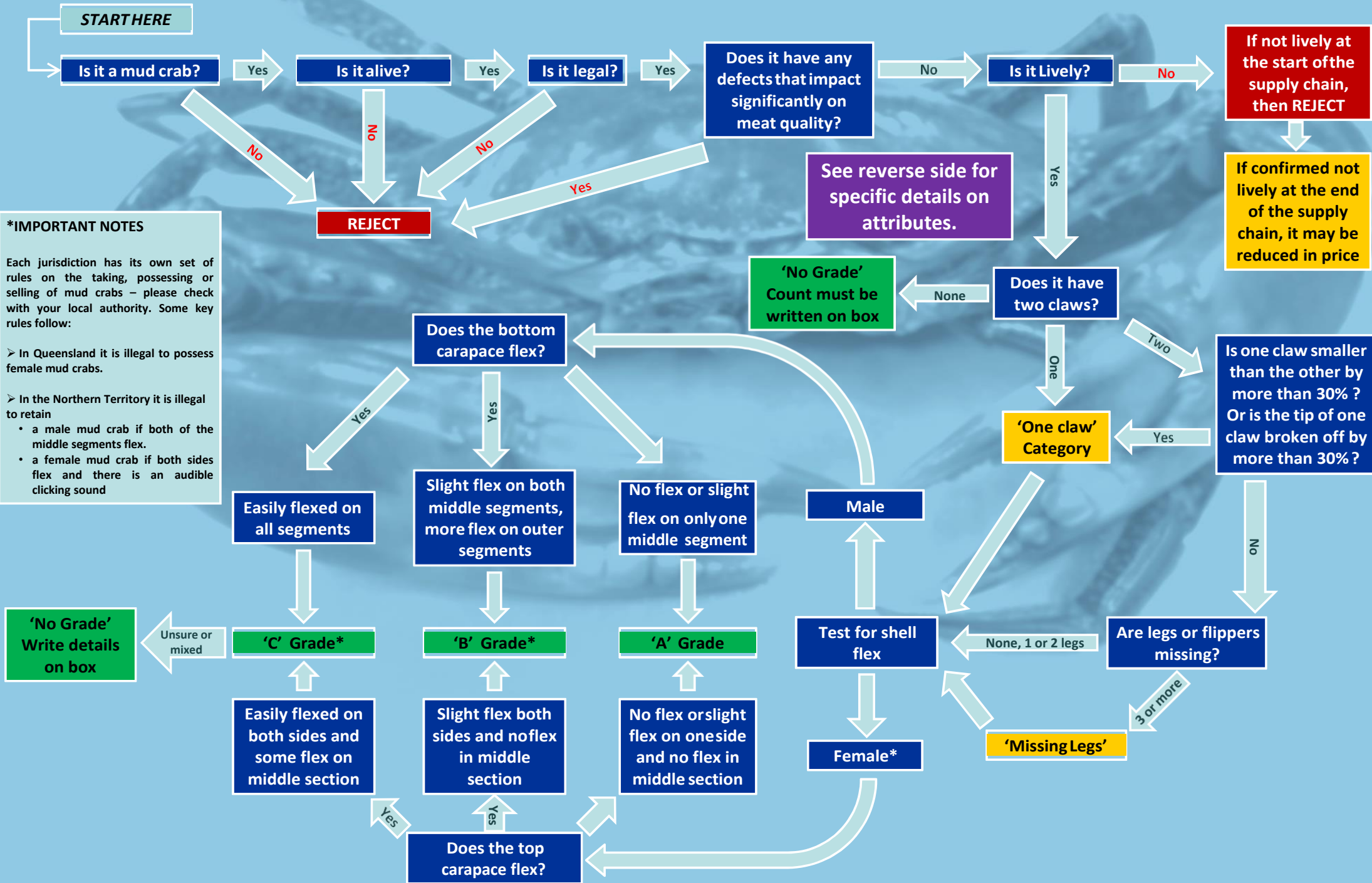


MUD CRAB GRADING

Members have requested that we resend the guides for the Australian Industry Live Mud Crab Grading Scheme.

The content of this update is provided for information purposes only. The information on these updates are provided on the basis that all persons accessing the information undertake their own responsibility for assessing the relevance and accuracy of it.

Australian Industry Live Mud Crab Grading Scheme - Version 3 - 2016



***IMPORTANT NOTES**

Each jurisdiction has its own set of rules on the taking, possessing or selling of mud crabs – please check with your local authority. Some key rules follow:

- In Queensland it is illegal to possess female mud crabs.
- In the Northern Territory it is illegal to retain
 - a male mud crab if both of the middle segments flex.
 - a female mud crab if both sides flex and there is an audible clicking sound

If not lively at the start of the supply chain, then REJECT

If confirmed not lively at the end of the supply chain, it may be reduced in price

See reverse side for specific details on attributes.

'No Grade' Count must be written on box

'No Grade' Write details on box

'Missing Legs'

'C' Grade*

'B' Grade*

'A' Grade

Test for shell flex

Female*

Male

REJECT

Is one claw smaller than the other by more than 30%? Or is the tip of one claw broken off by more than 30%?

'One claw' Category

Easily flexed on all segments

Slight flex on both middle segments, more flex on outer segments

No flex or slight flex on only one middle segment

Easily flexed on both sides and some flex on middle section

Slight flex both sides and no flex in middle section

No flex or slight flex on one side and no flex in middle section

Does the top carapace flex?

Does the bottom carapace flex?

START HERE

Is it a mud crab?

Is it alive?

Is it legal?

Does it have any defects that impact significantly on meat quality?

Is it Lively?

Does it have two claws?

Are legs or flippers missing?

Easily flexed on all segments

Slight flex on both middle segments, more flex on outer segments

No flex or slight flex on only one middle segment

Easily flexed on both sides and some flex on middle section

Slight flex both sides and no flex in middle section

No flex or slight flex on one side and no flex in middle section

Does the top carapace flex?

Does the bottom carapace flex?

START HERE

Is it a mud crab?

Is it alive?

Is it legal?

Does it have any defects that impact significantly on meat quality?

Is it Lively?

Does it have two claws?

Are legs or flippers missing?

Easily flexed on all segments

Slight flex on both middle segments, more flex on outer segments

No flex or slight flex on only one middle segment

Easily flexed on both sides and some flex on middle section

Slight flex both sides and no flex in middle section

No flex or slight flex on one side and no flex in middle section

Does the top carapace flex?

Does the bottom carapace flex?

START HERE

Is it a mud crab - *Scylla* species



A mud crab has nine similarly sized spines on each side of the carapace. If not, it must be rejected.

Bleeding



If there is a significant amount of blood, reject the crab. A small amount of blood may not be 'A grade'.

Damaged or deformed



If damage or deformity is significant **and likely to impact on meat quality or survivability**, reject the crab. Minor damage and excessive barnacles are not defects.

Old empty crabs



If scarring is significant, claw teeth completely worn, **and** the crab is light in weight for its size, reject the crab.

Frothing



If the froth is black or yellow, reject the crab. If there is a significant amount of clear froth and the crab is slow, it may be downgraded. Short exposure to cold can cause temporary frothing and the crab will recover.

Parasite



Loxothylacus ihlei (Loxy) appears as a mass under the flap which can be confused for an egg bearing female. If evident, reject.

Is it lively?



A lively crab's legs will provide resistance or push back against you, and their eyes react to movement. A cold crab may appear to be slow and can be revived. Crabs placed on their back may appear motionless, so confirm liveliness by untying or wetting.

Two normal and complete claws



If one claw is smaller than the other by more than 30% or the top tip is broken off by more than 30% and signs of spoilage, then 'One claw' category.

Male shell flex test



Hold the crab in both hands, with your palms facing upwards and the abdominal flap of the crab facing upwards. Place the flat of your thumbs on the middle segments (next to the 2nd walking legs and either side of the flap, see **X** on diagram) and press gently at first.

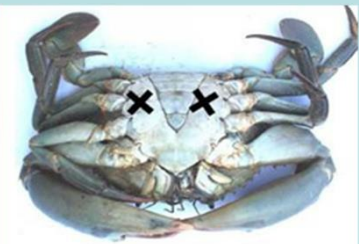
'A' Grade - No flex with firm pressure (~6kg) or slight flex on only one middle segment

'B' Grade - Slight flex with moderate pressure (~4kg) on both middle segments, more flex on outer segments

'C' Grade - Easily flexed (~2kg) with minimal pressure on all segments. Excessively soft on most segments are out of grade and should be returned to the water.

Note:

- Only press once. Repeated pressure will damage the shell.
- Segments already damaged from previous tests should not be used to determine grade.
- Do not use the tip of your thumb to apply pressure.
- Avoid excessive pressure as shell damage will reduce survivability.
- In the NT it is illegal to retain a male mud crab if both of the middle segments flex.



'No Grade' - Write details on box.

Accessed only for liveliness, shell damage, missing legs or claws and other 'defects'.
Details to include: - sex, one or no claws, 'missing legs', count & weight of each category.
Mandatory that number of no claws crabs be written on box or buyer can reject.

Female shell flex test



Hold the crab in both hands, palms facing upwards and the abdominal flap facing down. Place the flat of your thumbs on the carapace, in line with the widest part of the carapace and where the string is (or would be if the crab was tied up, see **X** on the diagram), and press gently at first.

'A' Grade - No flex with firm pressure (~6kg) or slight flex on only one side (either side) and no flex in middle section

'B' Grade - Slight flex (~4kg) on both sides and no flex in middle section

'C' Grade - Easily flexed (~2kg) on both sides and some flex on middle section. Excessively soft all over top carapace are out of grade and should be returned to the water.

Note:

- Only press once. Repeated pressure will damage the shell.
- Carapace already damaged from previous tests should not be used to determine grade.
- Do not use the tip of your thumb to apply pressure.
- Avoid excessive pressure as shell damage will reduce survivability.
- In the NT it is illegal to retain a female mud crab if both sides flex and there is an audible clicking sound.



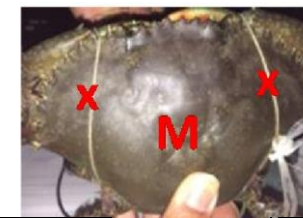
Australian Industry Live Mud Crab Grading Scheme - Version 3

Pressure is applied by using the pad of a straight thumb, not the tip of the thumb with a bent knuckle.

A segment that is already damaged cannot be used to determine shell hardness.

The following tables can be used to determine grades with greater precision when there is uncertainty.

Shell hardness grade	Description
4	No flex using firm pressure ~ 6kg
3	Slight flex with moderate pressure ~ 4kg
2	Easily flexed with light pressure ~2kg
1	Very soft, easily flexed with minimal pressure ~1kg



Grade	Male	Segments (x)	Total score	Female	Zone (x)	Total score
A	No flex or slight flex on only one middle segment (either side)	444,444- 434,444	24-23	No flex or slight flex on only one side (either side) and no flex in middle section (M)	4,4-4,3	8-7
B	Slight flex on both middle segments, more flex on outer segments	434,434- 323,323	22-16	Slight flex on both sides and no flex in middle section	3,3 - 3,2	6-5
C	Easily flexed on all segments	323,322- 212,212	15-10	Easily flexed on both sides and some flex on middle section	2,2	4
	Out of grade- return to water		<10	Out of grade - return to water		<4