

*The PFA represents its members' interests. If you need our help on any issue, please do not hesitate in contacting the PFA head office (6652-7374) &/or the Chief Executive Officer (0429303371)*

## PFA COM MEETING – FRIDAY 22 JUNE

The PFA COM met today at the Newcastle Commercial Fishermen's Cooperative. Discussions surrounding recent issues and activities – such as recent Financial Health Checks, promotional strategies, discussions with DPI re management linkages, Gas certification, eel trials, applications for research funds, AMSA transitioning issues, Presentations were provided by:

- AMSA on the containers and new survey requirements (see below advice),
- Recent consumer research to inform the country of origin labelling discussions;
- Gas certification requirements and PFA negotiations for an industry exemption
- MFAC discussions re

## AMSA

### Reduction of periodic survey requirements.

**All domestic commercial vessels are required to have a national law certificate of survey—unless an exemption applies. The new survey requirements for domestic commercial vessels start on 1 July 2018.**

- Implemented through Marine Order 503 and Part 2 of the Marine Surveyor Manual (NSAMS 4/section 14 of USL Code no longer apply)
- Applies to all new and existing (grandfathered) vessels
- Most vessels with a CoS will be in low survey frequency - renewal survey (in and out of water) required
- More than a third of vessels with a CoS will be in medium survey frequency - one mid cycle in-water survey plus renewal survey (in and out of water) required
- Remaining vessels with a CoS will be in high survey frequency - four in five-year survey required (no survey at year 4)

NSAMS Survey Level 2		503 Survey Frequency Medium	
<p><b>NSAMS Level 2 Survey Requirements</b></p> <p><b>Year 0</b> Initial survey</p> <p><b>Year 1</b> No surveys</p> <p><b>Year 2</b> No surveys</p> <p><b>Year 3</b> In &amp; out of water surveys</p> <p><b>Year 4</b> No surveys</p> <p><b>Year 5</b> Renewal in &amp; out of water surveys</p>	<p>Class 2C &lt; 7.5m with passengers</p> <p>Class 2D with passengers</p> <p>Class 2E with passengers</p> <p>Class 4C</p> <p>Class 4D with overnight passengers</p> <p>Class 4E with overnight passengers</p>	<p>Class 2A with no passengers</p> <p>Class 2B extended with no passengers</p> <p>Class 2B with no passengers</p> <p>Class 3A, 3B extended and 3B</p> <p>Class 2C ≥ 12m</p> <p>Class 2C with a modifier</p> <p>Class 2D with a modifier</p> <p>Class 2E with a modifier</p> <p>Class 3C ≥ 12m</p> <p>Class 2D ≥ 12m with passengers</p> <p>Class 2E ≥ 12m with passengers</p> <p>Class 4C, 4D &amp; 4E ≥ 12m</p> <p>Class 4C, 4D &amp; 4E with a modifier</p> <p>Class 3C, 3D &amp; 3E with a modifier</p>	<p><b>503 Survey Category Medium Requirements</b></p> <p><b>Year 0</b> Initial survey</p> <p><b>Year 1</b> No surveys</p> <p><b>Year 2</b> In water survey</p> <p><b>Year 3</b> No surveys</p> <p><b>Year 4</b> No surveys</p> <p><b>Year 5</b> Renewal in &amp; out of water surveys</p>

*The PFA represents its members' interests. If you need our help on any issue, please do not hesitate in contacting the PFA head office (6652-7374) &/or the Chief Executive Officer (0429303371)*

NSAMS Survey Level 1		503 Survey Frequency High	
<p><b>NSAMS Level 1 Survey Requirements</b></p> <p><b>Year 0</b> Initial survey</p> <p><b>Year 1</b> In water survey</p> <p><b>Year 2</b> In water survey</p> <p><b>Year 3</b> In &amp; out of water surveys</p> <p><b>Year 4</b> In water survey</p> <p><b>Year 5</b> Renewal in &amp; out of water surveys</p>	<p>Class 1</p> <p>Class 2A</p> <p>Class 2B &gt; 7.5m</p> <p>Class 2C &gt; 7.5m</p> <p>High Risk Class 2C &lt; 7.5m</p> <p>High Risk Class 2D &lt; 7.5m</p> <p>High Risk Class 2E &lt; 7.5m</p> <p>Class 3A</p> <p>Class 3B extended &amp; 3B</p> <p>Class 3C &gt; 7.5m</p> <p>Unpowered Barges of high risk</p> <p>Ferries in chains</p>	<p>Class 1</p> <p>Class 2A with passengers</p> <p>Class 2B extended with passengers</p> <p>Class 2B with passengers</p> <p>Vessels with steam propulsion</p> <p>Submersibles</p> <p>Wing-in-ground effect craft</p> <p>Novel Vessels</p> <p>High speed thrill ride vessels</p>	<p><b>503 Survey Category High Requirements</b></p> <p><b>Year 0</b> Initial survey</p> <p><b>Year 1</b> In water survey</p> <p><b>Year 2</b> In water survey</p> <p><b>Year 3</b> Out of water surveys</p> <p><b>Year 4</b> No surveys</p> <p><b>Year 5</b> Renewal in &amp; out of water surveys</p>
NSAMS Survey Level 3		503 Survey Frequency Low	
<p><b>NSAMS Level 3 Survey Requirements</b></p> <p><b>Year 0</b> Initial survey</p> <p><b>Year 1</b> No surveys</p> <p><b>Year 2</b> No surveys</p> <p><b>Year 3</b> No surveys</p> <p><b>Year 4</b> No surveys</p> <p><b>Year 5</b> No surveys</p>	<p>Class 2C &lt; 7.5m with no passengers</p> <p>Class 2D &gt; 7.5m with no passengers</p> <p>Class 2E &gt; 7.5m with no passengers</p> <p>Class 3C &lt; 7.5m</p> <p>Class 3D &gt; 7.5m</p> <p>Class 3E &gt; 7.5m</p> <p>Class 4D &gt; 7.5m no overnight passengers</p> <p>Class 4E &gt; 7.5m no overnight passengers</p>	<p>Class 2C &lt; 12m no modifier</p> <p>Class 2D &lt; 12m passengers, no modifier</p> <p>Class 2E &lt; 12m passengers, no modifier</p> <p>Class 2D no passengers &amp; no modifier</p> <p>Class 2E no passengers &amp; no modifier</p> <p>Class 3C &lt; 12m no modifier</p> <p>Class 3D no modifier</p> <p>Class 3E no modifier</p> <p>Class 4C &lt; 12m no modifier</p> <p>Class 4D &amp; 4E &lt; 12m no modifier</p> <p>Class 2 Ferry in chains</p> <p>Class 2 &amp; 3 permanently moored</p> <p>Class 2 &amp; 3 unpowered barge no modifier</p>	<p><b>503 Survey Category Low Requirements</b></p> <p><b>Year 0</b> Initial survey</p> <p><b>Year 1</b> No surveys</p> <p><b>Year 2</b> No surveys</p> <p><b>Year 3</b> No surveys</p> <p><b>Year 4</b> No surveys</p> <p><b>Year 5</b> Renewal in &amp; out of water surveys</p>

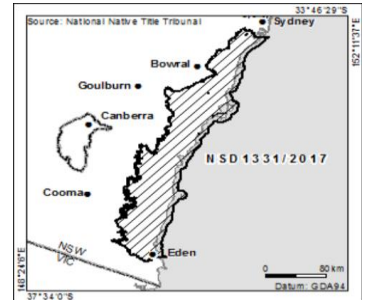
- Flexibility to move vessels into higher or lower survey frequency levels, depending on the performance of the individual vessel
- Vessels which perform poorly during survey or compliance monitoring activities will be moved into a higher survey frequency level
  - high survey frequency vessels can be moved into annual survey
  - non-survey vessels may be moved into medium survey frequency
- Owners can apply to move a vessel into a lower survey frequency level when their CoS is being renewed after 2023 - Survey Mobility Rules will be released before that date
- All vessels will move to the new survey regime on 1 July 2018. Replacement certificates will be issued by that date based on the new schedules
  - This will be done automatically, and vessel owners will not have to apply for the new certificate
- The vessel's survey year will be based on:
  - when the last shaft survey was completed; or
  - when the next out of water survey is due; or
  - other available survey information for the vessel

*The PFA represents its members' interests. If you need our help on any issue, please do not hesitate in contacting the PFA head office (6652-7374) &/or the Chief Executive Officer (0429303371)*

---

## **NATIVE TITLE APPLICATION SYDNEY TO EDEN**

The PFA has been advised of a native title determination application made to the Federal Court for the area along the south coast that extends south from Sydney to Eden (see map). Members who have that may be affected are urged to contact the PFA as soon as possible. The PFA are **NOT** able to make an application, on behalf of our members. Fishers **MUST** register their name and details as part of the application by **29<sup>th</sup> August**. A fact sheet about this process is also available – please contact us for a copy of it.



## **BEWARE SUBMERGED CONTAINERS**

### **Have you been affected?**

Contact Aus. Ship to make a claim:

Address: Level 5, Suite 5.02 Fujitsu House  
15 Blue Street  
North Sydney NSW 2060 Australia  
Email: [claims@ausship.com.au](mailto:claims@ausship.com.au)

Chart affected – AUS 207/AUS 209/AUS 219/AUS 489/AUS 809/AUS 810/AUS 4643  
*Due to 83 shipping containers lost overboard in 33-02S 152-04E at 311430hrs UTC May 18, obstructions on the seabed are likely to exist in an area bounded by the following positions:*

33° 05'.0 S 152° 03'.0 E  
32° 50'.0 S 151° 54'.0 E  
32° 38'.0 S 152° 12'.5 E  
32° 45'.0 S 152° 21'.5 E.

It is possible that obstructions on the seabed may exist in an area bounded by the following positions:

32° 45'.0 S 152° 21'.5 E  
32° 38'.0 S 152° 12'.5 E  
32° 08'.0 S 152° 33'.0 E  
32° 20'.0 S 152° 51'.5 E.

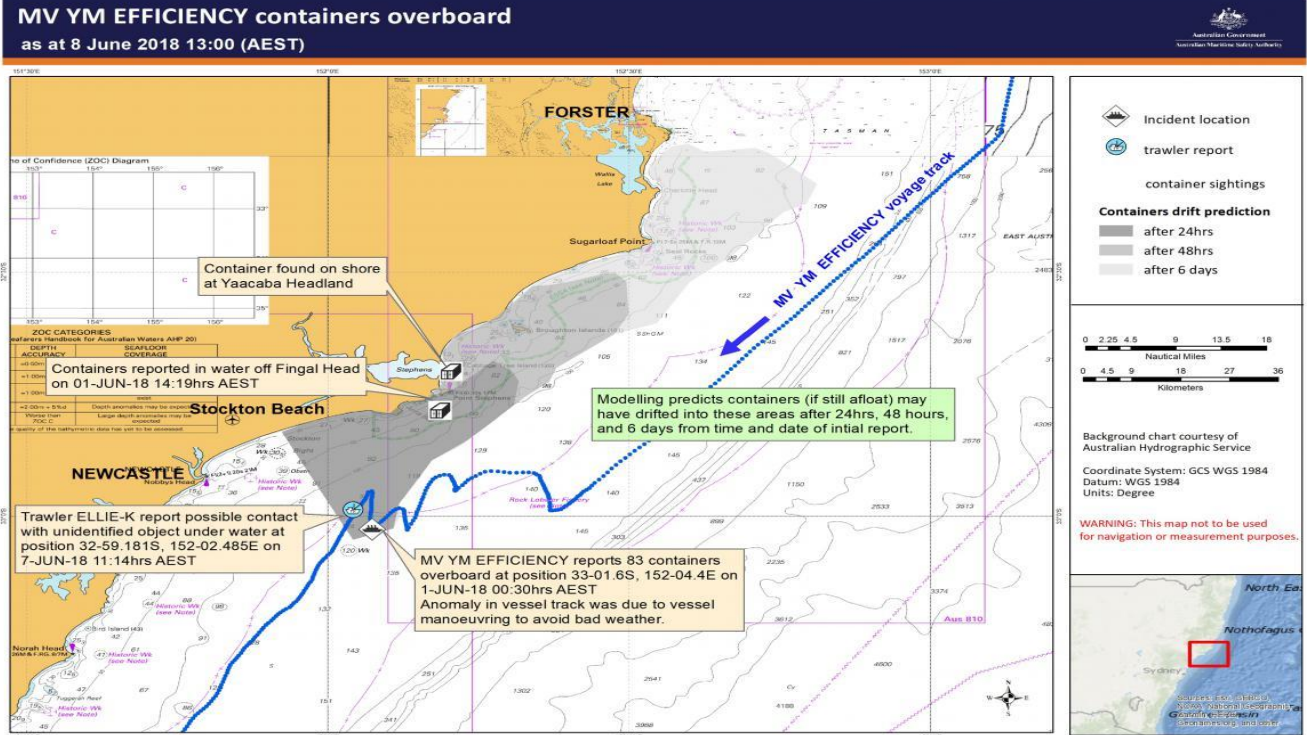
Mariners are advised to navigate with caution in the area.

This is a fluid situation and the next stages of the operation is dependent on tides and conditions.

For safety reasons, people are being asked to stay away from the debris – contact 13 12 36 and select option 2 if you come across any debris

**Visit [AMSA's website](#) for a map of potential hazards to mariners.**

**The PFA represents its members' interests. If you need our help on any issue, please do not hesitate in contacting the PFA head office (6652-7374) &/or the Chief Executive Officer (0429303371)**



AMSA has confirmed that a subsea search for the missing containers from the *YM Efficiency* will begin in the next few days as soon as weather conditions allow.

AMSA has confirmed that the ship's insurers have contracted Port of Newcastle to provide their hydrographic survey vessel to initially conduct a five-day search.

The initial search will focus on the high priority areas around where the containers were lost, and where modelling indicates that most of them are likely to be located. Please see the above map of the search area, the location where the containers were lost and the location of the two containers which have been recovered so far.

Given the potential risk to vessel safety, particularly trawling operations, AMSA will update the public and industry stakeholders as soon as we have confirmed data.

More information is available on [AMSA's website](#), including updates on navigation warnings, reporting debris and making a claim for insurance.

*The PFA represents its members' interests. If you need our help on any issue, please do not hesitate in contacting the PFA head office (6652-7374) &/or the Chief Executive Officer (0429303371)*

*The following advice has been provided directly by the DPI for the PFA. We intend to constantly have this direct communication from DPI available to our members as we believe it is important to have these DPI statements or reminders. If you have questions re the info please contact DPI directly.*

## MESSAGE FROM THE DPI FISHERIES

### Key dates

**Sun 24 June** Last day to complete online fishing business / share transfers via FisherDirect (before end of financial year).

Note: All pending online transactions must be completed by the end of this day (if they include quota with a new fishing period starting 1 July) or they will be deleted.

Fishing Business / share transfers will be unavailable 25 June - 1 July

**Fri 29 June** IAP final advice due to government for the Southern Fish Trawl Restricted Fishery

**Sun 1 July** Start of new fishing (quota) period for mud crab, blue swimmer crab, spanner crab, eel and eastern sea garfish – annual quota will be issued by this date

**Mon 2 July** Snapshot date for 2018/19 management charges (charges will be calculated based on shareholdings **at 4pm** on this date)

**Fri 6 July** Closing date for applications to correct fishing activity records relevant to the Independent Allocation Panel process

### More rent relief for fishing co-operatives on Crown land

The NSW government has recently announced that fishing co-ops located on Crown land may be eligible for a further two years of rent relief. To be eligible, co-ops will need to develop a sustainability plan with the Small Business Commissioner. If approved, they will then be eligible for a 50% rebate on rent for the next 2 years. This is positive news and yet another sign the government is supporting the industry into the future.

### Spanner crab quota period starting 1 July

Ocean Trap and Line - Spanner Crab North and Spanner Crab South shareholders are reminded that the fishing period for new transferable spanner crab catch quota starts 1 July. All spanner crab endorsement holders must hold quota to cover any spanner crabs they retain, and must report quota usage in real time using the FisherMobile app. Please urgently register for FisherMobile if you haven't already done so. An email with details, including links to more information on the DPI website, will be sent shortly.

### Extension to rent relief for co-ops located on Crown land

### Commercial Fisheries hotline - 1300 726 488

*The content of this update is provided for information purposes only. The information on these updates are provided on the basis that all persons accessing the information undertake their own responsibility for assessing the relevance and accuracy of it.*