

The PFA represents its members' interests. If you need our help on any issue, please do not hesitate in contacting the PFA head office (6652-7374) &/or the Chief Executive Officer (0429303371)

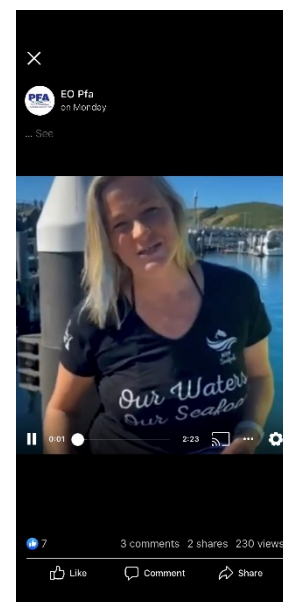
COVID-19 UPDATE - Many businesses have been impacted by COVID-19, including farmers and fishers. RAA customers are encouraged to contact us to discuss available hardship options. Get in touch by **1800 678 593** or email rural.assist@raa.nsw.gov.au. Please be aware that due to network congestion, some calls are not connecting. Please try the email in this case.

PFA's BUMBAG LIFEJACKET VIDEO

We had a few enquires regarding the bumbag life jackets we showed in our earlier videos, so we worked with AMSA and RMS to produce a demo of them for you. The life jackets are a good option for trappers and liners who are concerned that their gear could pierce the life jacket's bladder. The main issue for the jackets are that they won't save you if you are knocked unconscious and fall into the water – this is the main issue for any lifejacket that is not an automatic and does bare consideration when you are choosing a life jacket for your operation.

WHALE ENTANGLEMENT MITIGATION PROGRAM

You may have noticed some recent promotion of the PFA/OceanWatch Australia Whale Entanglement Mitigation Program – funded by the Australian Government's Department of Agriculture, Water and Environment. The project has now been extended to the end of the year and is getting lots of positive feedback. Sincere thanks to the 14 Ocean Trap & Line fishers involved in the project!



CORONIAL REPORT – The following is recommendations from the coronial inquiry into the loss of FV *Cassandra* and FV *Dianne*

Stability:

Both vessels had previously been modified in ways that may have reduced their stability. Both vessels still had sufficient stability to comply with the requirements of the National Law at the time of their last assessment. However, the modifications may have reduced the ability for the vessels to recover from a major heeling event.

If you intend to modify your vessel, consult an accredited marine surveyor, and if necessary, carry out a stability assessment when the work is complete.

Modifications include moving, repositioning, installing or modifying parts of the vessel like lifting equipment, fishing gear configuration, any kind of tank, refrigeration equipment and towing points.

You should also consider how weights loaded on your vessel will affect its' stability and ability to recover from a major heeling event. Learn more about [fishing vessel stability](#).

Hookup Recovery:

Cassandra's loss of stability was in part due to its trawl gear getting hooked up on the sea floor. The risk of capsize may have been reduced if different recovery techniques had been used to free the gear. For example, a snatch block could have been used to pull the trawl gear to the side of the vessel—not the end of the boom—reducing the heeling forces applied to the vessel.

You need to assess the risks associated with your vessel hooking up, and how you would recover from such a situation. Learn more about [hook-up response](#) for trawlers.

EPIRBs:

In both events, the vessels' EPIRBs were not activated, leading to a delay in search and rescue operations. For *Cassandra*, this delay was about four hours, while for *Dianne* the delay

was over 12 hours.

There is a possibility that lives could have been saved after *Dianne* capsized if an EPIRB had activated and the rescue operation commenced immediately.

AMSA has introduced **new requirements for float-free EPIRBs to be fitted on certain types of vessels**. These changes take effect from 1 January 2021. In the meantime, we encourage vessel operators to fit float-free EPIRBs to their vessels as soon as possible.

Learn more about the [transition to mandatory float-free EPIRBs](#).

Lifejackets

The coroner also recommended that crew on fishing-vessels **wear inflatable lifejackets fitted with personal locator beacons (PLBs)**.

PLBs are not a substitute for an EPIRB, but can still alert authorities that something has happened.

AMSA supports this recommendation and encourages vessel operators and crews to consider the safety benefit of wearing lifejackets with PLBs.

Emergency escape options

The coroner recommended some simple steps to aid with escaping from a vessel in an emergency.

1. **Fit emergency exit LED strip lighting in the cabins to direct people to exits** (read more about guidance on strip lighting at [National Standard for Commercial Vessels](#) Part C1 5.14.2.2).
2. Install emergency grab bags containing a dive mask, knife, waterproof torch and a portable air source with a fixed regulator.

We recommend that you consider the use of these types of options as a part of the risk assessment for your vessel.

Securing loose items

When divers inspected *Dianne*, they found that equipment had dislodged and fallen over, blocking exits from the wheelhouse.

It is important to think about what items on your vessel could move in a major heeling event. A capsize can be a sudden event, so equipment needs to be effectively secured by restraining straps, or be bolted down so they cannot move.

Reminder

- **Review your risk-assessment for your operation regularly.**
- **Consult an accredited marine surveyor if considering making any modifications to your vessel that could affect its stability.**
- **Know what to do in a hook-up event.**
- **Fit a float-free GPS-enabled EPIRB.**
- **Wear a lifejacket with a PLB.**
- **Consider emergency escape options for your vessel.**
- **Secure loose items on your vessel.**

CEO PFA - LEAVE

I'll be on leave for a week starting next week from Monday 24th August and returning on Monday 31st August. Please contact the office directly on (02) 6652 7374 or send me an email ceo@pfai.com.au and I will deal with the matter upon my return.

CONTAINERS FROM APL ENGLAND

On Sunday 24 May 2020 TfNSW – NSW Maritime was advised that the container vessel, *APL England*, on route from China to Melbourne, had reported the loss of 40 containers overboard and some 50 containers

The PFA represents its members' interests. If you need our help on any issue, please do not hesitate in contacting the PFA head office (6652-7374) &/or the Chief Executive Officer (0429303371)

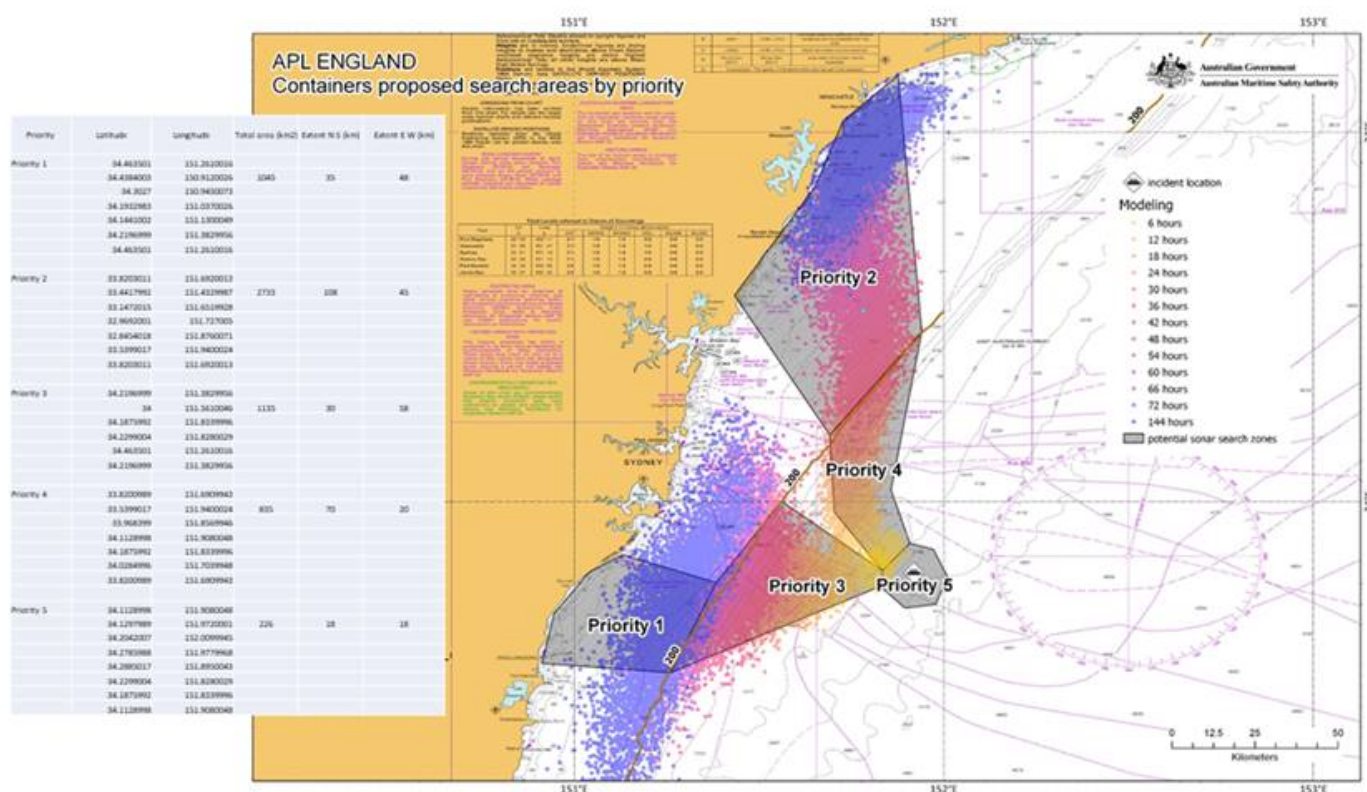
damaged on-board in a position approximately 40 nm east of Wollongong. Of the lost containers 24 are known to be empty refrigeration containers (reefer) and 26 containing with varying contents. One container was reported as containing fire extinguishers classified as dangerous goods. It is estimated that of the 26 containers with contents around half would have sank immediately in waters over the continental shelf. To date 15 containers have been recovered, of which 14 were empty reefers. The remaining 10 reefers are likely to be floating for some time under the influence of predominant currents. The recovered containers consisted of:

- 5 reefers that came ashore at Birdie Beach
- 5 reefers that came ashore at Bateau Bay (Crackneck Point) and were recovered ashore.
- 4 reefers taken in tow approximately 8 mile off Norah Head and 3 were recovered ashore (with one lost during the tow)
- 1 reefer recovered from Magic Pt (south of Maroubra Beach) that was lost from the tow outlined above.
- 1 full container taken in tow off Wollongong and recovered ashore.

Other reported sightings include:

- 1 container floating below the surface 40 mile off Norah Head,
- 1 container 23 mile off Gerringong with contents discharging and presumed sunk
- 1 container 3 mile off Narooma
- 1 container 10 mile off Bermagui
- 1 container 4 mile off St Georges Head (South of entrance to Jervis Bay)

The PFA has met with both AMSA and RMS regarding our concerns and the need to find the submerged containers. AMSA has issued a notice of the following search area for the containers. They have also advised that there has been significant modelling and analysis behind the determination of these areas. The Insurers are currently cooperating with AMSA and complying with the terms of the Direction. AMSA has stated that they share our concerns with respect to the seriousness of these issues and has established a targeted inspection campaign over the next 12 months to address the PFA's concerns.



The PFA represents its members' interests. If you need our help on any issue, please do not hesitate in contacting the PFA head office (6652-7374) &/or the Chief Executive Officer (0429303371)

NSW SEAFOOD RECIPES

This week, whip on your warmest woollies and try this one at home! Legendary Chef Tom Boyd creates this delicious winter warmer after pro fisher Miro Mislov and ET catch fresh NSW Leather Jacket. See more, To see how it's done, visit the Seafood Escape website, www.seafoodescape.com. Series 3, Episode 6 of ET's Seafood Escape program

PFA COM MEETING

Our NEXT PFA COM meeting is scheduled for Friday 4th September. The meeting will be held in Coffs Harbour but Zoom links will be available to members not wishing to travel. DPI Fisheries have been asked to present on a number of issues including the Business Efficiency Review Program, Cost Recovery and Harvest Strategies. Lunch will be provided.

NSW SEAFOOD RECIPE

NSW Roast Leather Jacket

Whip on your winter woollies and try this recipe at home! Series 3, Episode 6 of ET's Seafood Escape features pro fisher Miro Mislov and legendary chef Tom Boyd from Margan Restaurant who creates this delicious treat featuring NSW Leather Jacket. See more online via the Seafood Escape website.

KEY INGREDIENTS

- 2 x 300g Whole NSW Skinned Leather Jackets
- 50g Seaweed Butter
- 30g Warrigal Greens (or spinach/kale)
- 10g Sea Bile (or shredded snow peas)
- 10g Turkey Rhubarb (or parsley, mint or coriander)
- 30g Samphire (or green peas)
- 5g Puffed Rice & Cashew Furikake

METHOD

SEAWEED BUTTER: • 250g unsalted butter • 20g ground dry wakame • 10g sea salt • 5g pepper. Blitz all together in food processor. Roll into sausage shaped log in cling wrap. Refrigerate for later use.

PUFFED RICE & CASHEW FURIKAKE: • 50g wild rice • 500 ml rice bran oil (or vegetable oil), • 100g roast unsalted cashews • 6 sheets toasted nori • 50g toasted white sesame seeds • 20g toasted black sesame seeds • 5g sea salt • 2g pepper

Fry wild rice in a deep pot of rice bran oil until puffed. Strain and reserve puffed rice and pour onto paper lined tray to cool. Toast nori sheets over a naked flame on both sides until crisp. Cool nori then crunch up into small flakes. Combine all ingredients well in a bowl. Store in air tight container for later use.

NSW LEATHER JACKETS: Preheat the oven to 220°C. In a frying pan, heat vegetable oil and fry for 4 minutes on one side. Flip and top with the seaweed butter, samphire & warrigal and transfer to the oven for 5 minutes. Remove from the oven and scatter the remaining sea bile & turkey rhubarb over the fish and allow the fish to rest in pan for 5 minutes. Remove fish from pan and put on service plate, pour butter and beach greens over the fish, sprinkle with furikake and serve.

Photo Credit: www.seafoodescape.com



SEAFOOD INDUSTRY MENTAL HEALTH PILOT FOR NEWCASTLE

Jo Marshall from SIA has let us know she's in discussions with a number of people who could become Trusted Advocates in Newcastle and surrounds. These will be people who first and foremost are people you can get to know and have a chat with - here to listen and support, or just for a chat. They are not psychologists or counsellors, but if anyone wants to get some guidance in finding help, your Trusted Advocates will be trained and armed with info to help. They'll also be armed with lots of tips on managing things like stress. Jo is also keen to hear from anyone who has a great doctor / GP that they would recommend to others, or knows of a counsellor/psychologist they'd recommend. She will be out and about educating these people about our specific industry challenges so that they can provide knowledgeable, industry specific help to those in need. You can e-mail her privately with a recommendation for any of these, or give her a confidential call for a chat. Jo@seafoodindustryaustralia.com.au or 0408 008 344

The following advice has been provided directly by the DPI for the PFA. We intend to constantly have this direct communication from DPI available to our members as we believe it is important to have these DPI statements or reminders. If you have questions re the info, please contact DPI directly.



Department of
Primary Industries

PFA Newsletter content - Week ending 23 August 2020

DPI COVID-19 update

DPI teams are continuing their work, in-line with government guidelines and advice from health authorities. Our essential services continue working across the state's primary industries sector. There may be some delays; however, we are working to minimise any disruption. For the latest

The PFA represents its members' interests. If you need our help on any issue, please do not hesitate in contacting the PFA head office (6652-7374) &/or the Chief Executive Officer (0429303371)

advice on the NSW Government's response to COVID-19 visit www.health.nsw.gov.au
The DPI COVID-19 Advice Portal contains further information and links to assistance and resources available for primary producers including the Commercial Fisheries and Aquaculture sector. You can access the Portal at <https://www.dpi.nsw.gov.au/home/covid-19>
Any fishing business owner that may be experiencing problems repaying concessional loans through the Rural Assistance Authority should contact them on 1800 678 593 to discuss repayments.

Harvest strategies to drive NSW fishing management decisions

The NSW Government will provide fishers with greater certainty and transparency in fisheries management decisions, through the development of tailored harvest strategies in direct partnership with commercial, recreational and Aboriginal fishers.

More information: <https://www.dpi.nsw.gov.au/about-us/media-centre/releases/2020/harvest-strategies-to-drive-nsw-fishing-management-decisions>

Catch reporting tip: Correctly reporting your catch.

If you are unsure of the species code to use to report your catch on the Catch & Effort records submitted using the paper log sheets FisherDirect, or the FisherMobile App, you can contact the Catch Records team. The Catch Records team will assist you in identifying the species code based on the Australian Fish Names Standard. The Fisheries Research and Development Corporation (FRDC) also maintains a searchable database of all the standard fish names to help you - <http://www.fishnames.com.au/>

If you have any questions about Catch & Effort records, quota reporting, records of sale/possession, European Community Catch Certificates or registered fish receivers please contact the Catch Records team on 1800 994 850 or catch.records@dpi.nsw.gov.au

Quota usage season snapshot

The Quota Usage Season Snapshot for the current fishing period can be found at: https://www.dpi.nsw.gov.au/_data/assets/pdf_file/0010/1195228/Industry-Update-17-August-2020.pdf